

# Product Announcement



I.D. Number: 034PA

Cisco 2501CF and Cisco 2502CF CFRADs

The Cisco 2501CF and Cisco 2502CF Frame Relay Access Devices (CFRADs) allow customers to migrate their branch-to-SNA host access from dedicated Synchronous Data Link Control (SDLC) links to Frame Relay services with a cost-effective, reliable solution based on Cisco's Internetwork Operating System™ (IOS). Unlike FRADs, the Cisco 2500CF series CFRADs support advanced SDLC features such as SDLC Transport, SDLC-to-LAN conversion (SDLLC), Systems Network Architecture (SNA) traffic prioritization, and CiscoWorks™ Simple Network Management Protocol (SNMP) and monitoring. Cisco 2500CF CFRADs can be upgraded with software and memory to support full Cisco 2500 router functionality, protecting customers' investments in hardware and training.

## New Members of the Cisco 2500 Family

The Cisco 2501CF and 2502CF are existing Cisco 2501/2502 hardware configurations bundled with a software image that supports only serial-to-Frame Relay connectivity. Local-area network (LAN) interfaces are built into the Cisco 2501CF and 2502CF but are not functional with the 2501CF/2502CF software. The LAN interfaces can be enabled by purchasing an upgrade to a standard Cisco 2500 IOS™ feature set and additional memory as required.

## Features at a Glance

- Two fixed-configuration hardware models: the Cisco 2501CF and 2502CF
- Bundled software to support serial-to-Frame Relay access
- Cisco advanced SDLC features: SDLC Transport, SDLC-to-LAN conversion (SDLLC), local acknowledgment, and SNA address prioritization
- Upgradable to full LAN router support
- SNMP management

## Benefits Summary

- Cost-effective migration from SDLC-to-Frame Relay
- Elimination of SDLC session time-outs due to network delays
- Cost-effective host access through Ethernet or Token Ring mainframe interfaces
- Flexible migration from SDLC to LAN-based SNA access
- Protection of investments in hardware and training
- Remote configuration, monitoring, and control

## Money-Saving Applications

### SDLC-to-Frame Relay Migration

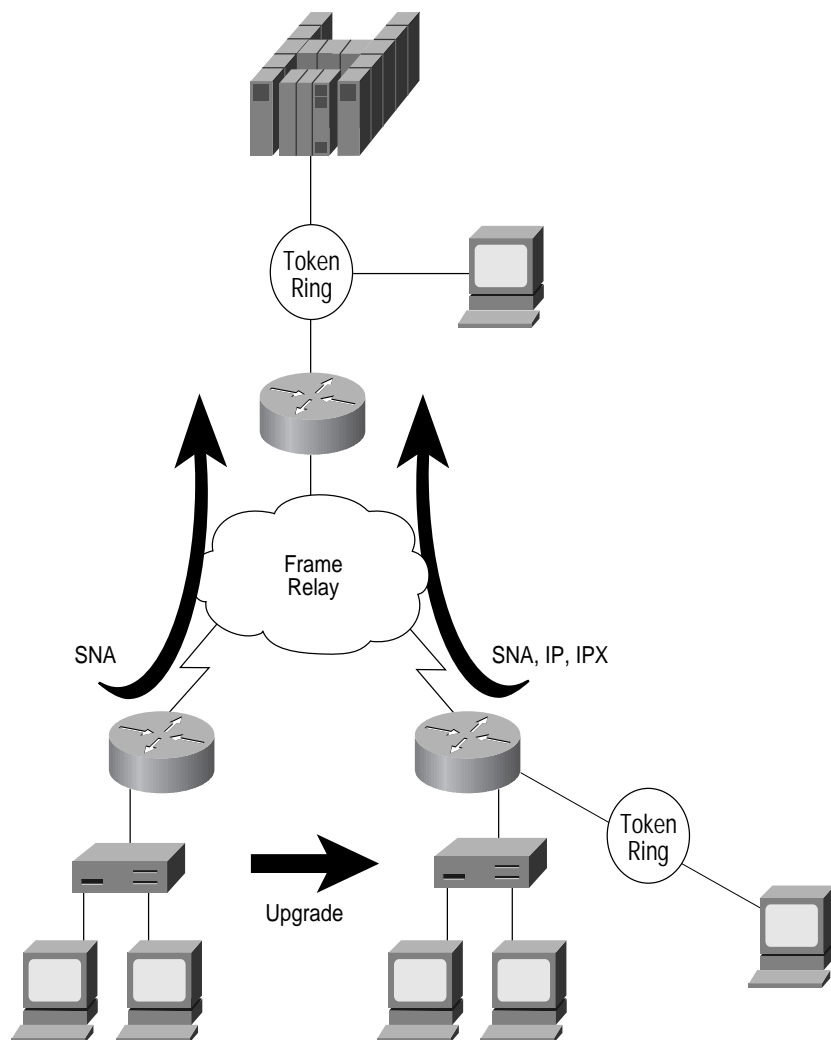
Most remote branches in large enterprises are connected to their host sites via dedicated point-to-point or multidropped SDLC links. Converting these SDLC links to a Frame Relay service offers the following benefits:

- Cost savings—Frame Relay links can offer up to 70 percent savings compared with leased lines.
- Any-to-any connectivity—Frame Relay can support client/server migration topology requirements.

Equipment costs can be a major concern when migrating from SDLC to Frame Relay. In branches where LANs are not currently deployed, a simple FRAD represents a lower initial investment than a router. In most cases, LAN deployment is planned and full routing capabilities will be required in the future, however, the cost difference between a full-function router and a simple FRAD can become a deterrent. The Cisco 2500CF series solves this dilemma by providing a low-cost entry solution for SDLC-to-Frame Relay access that can grow to support future LAN requirements. An example of this solution is shown in Figure 1 below.

Figure 1. The Cisco 2501CF and 2502CF can be upgraded to

support LAN-attachment and multiprotocol routing.



The Cisco 2500CF can be deployed for SNA host access in the two basic network configurations outlined in Figure 2 and Figure 3 below.

Figure 2. Cisco 2500 CFRADs provide host access over Frame Relay through a Cisco router at the host site.

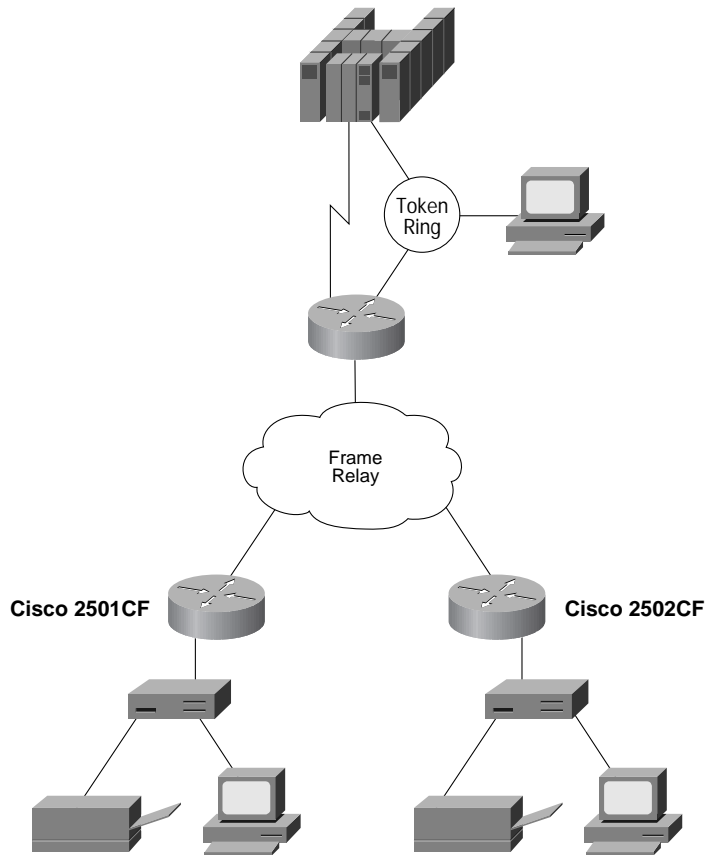
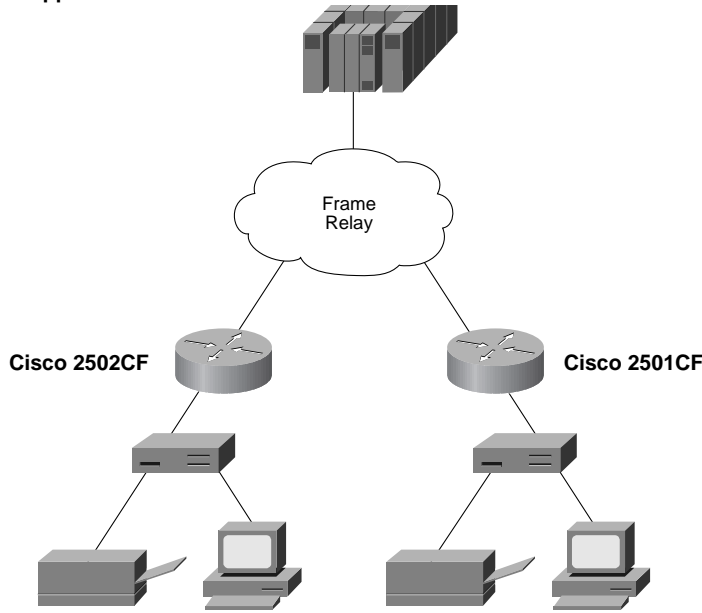
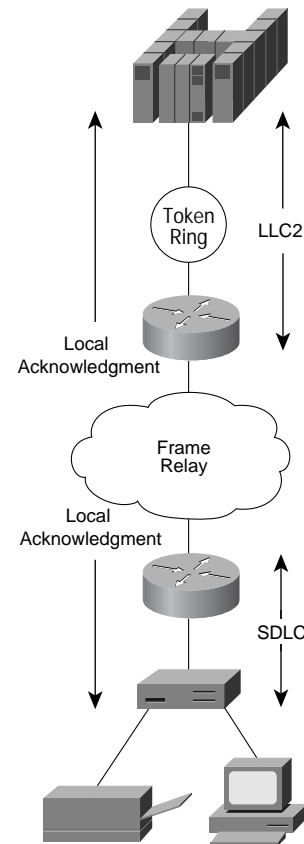


Figure 3. Cisco 2500 CFRADs connect directly to an IBM front-end processor (FEP) over Frame Relay using RFC 1490 support for SNA



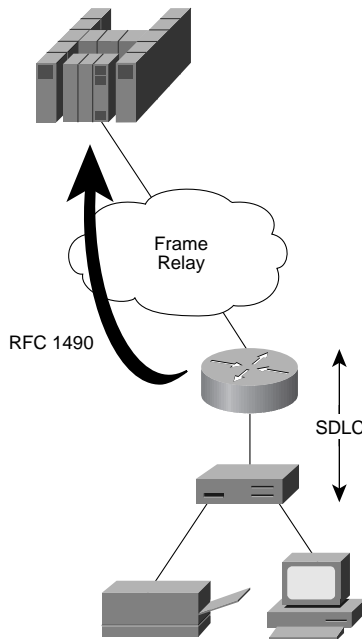
As shown in Figure 4 below, a Cisco 2500CF in a branch connected to a Cisco router at the central site offers the benefits of Token Ring connectivity to the FEP for performance improvement and cost savings and local acknowledgment of the SDLC sessions for increased reliability and session availability.

Figure 4. CFRADs support SDLC to Token Ring conversion and local acknowledgment of SDLC and Token Ring sessions



With Cisco's RFC 1490 support for SNA (planned availability in 1Q95) a Cisco 2500CF in a remote site can connect directly to an IBM FEP over Frame Relay. In Figure 5 below, the customer can avoid 3174 microcode upgrades required for Frame Relay operation. For more information on Cisco's RFC 1490 support for SNA, see the RFC 1490 product announcement.

**Figure 5. Cisco's RFC 1490 support for SNA will provide direct encapsulation in Frame Relay and allow CFRADs to interoperate with IBM controllers.**



Both models include the Cisco 2500CF IOS feature set, which includes Cisco's advanced SDLC support. The specific Cisco 2500CF features are summarized in the following table:

Category	Protocol/Feature
LAN	No LAN protocols or features are supported
WAN	Frame Relay
IP Routing	RIP, IGRP, OSPF, BGP, EGP
IBM	SDLC Transport, SDLC-to-LAN Conversion (SDLLC), SDLC Local Acknowledgment, SDLC Address Prioritization, PU and LU Address Prioritization
Management	SNMP, Telnet

Both models come standard with 2 MB of Flash EPROM memory and 2 MB of DRAM memory. The memory configuration of both models are expandable using standard Cisco 2500 memory upgrades.

Users can enable the LAN port on either model by ordering one of the standard Cisco 2500 IOS feature sets described in the following product information table. Upgrading to the IOS Enterprise feature set is required in order to retain all SDLC features. Upgrading the Cisco 2500CF to another IOS feature set may require memory expansion.

## Product Information

Model	Interface Configuration
Cisco 2501CF	Two synchronous serial interfaces and one software-disabled Ethernet interface
Cisco 2502CF	Two synchronous serial interfaces and one software-disabled Token Ring interface
The synchronous serial interfaces on both models support full-duplex and half-duplex operation, as well as Non Return to Zero (NRZ) and Non Return to Zero Inverted (NRZI) encoding.	

Category	Protocol/Feature	IP	DT	EN
LAN	IP, Bridging, LAN extension host	•	•	•
	IPX, AppleTalk Phase I and Phase II, DECnet IV		•	•
	DECnet V, OSI, XNS, Banyan VINES, Apollo Domain			•
WAN	Dual Synchronous Serial, Compression	•	•	•
	HDLC, PPP, X.25, Frame Relay, SMDS, <sup>1</sup> ISDN	•	•	•
IP Routing	RIP, IGRP, OSPF, BGP, EGP	•	•	•
	ES-IS, IS-IS			•
IBM	RSRB, Proxy Explorer, SNA Local LU Address Prioritization, Local Acknowledgment, Administrative Filtering, NetBIOS Name Caching, Access Control Filtering	•	•	•
	Serial Tunneling or SDLC Transport, SDLC Link-Level Support, SDLLC			•
Management	AutoInstall, SNMP, Telnet	•	•	•
Protocol Translation	Telnet, LAT, rlogin, TN3270, X.25 PAD			•

1. SMDS is only in EN as of Release 10.0. SMDS will be in all three feature sets as of Release 10.2(2).

## Orderability and Availability

The Cisco 2501CF and Cisco 2502CF are both available immediately for order and shipment in IOS Release 10.2 (1).

Access Without Compromise, Catalyst, CD-PAC, CiscoFusion, Cisco Internetwork Operating System, Cisco IOS, CiscoView, CiscoWorks, HyperSwitch, LAN<sup>2</sup>LAN, LAN<sup>2</sup>LAN Enterprise, LAN<sup>2</sup>LAN Remote Office, LAN<sup>2</sup>PC, LightStream, Newport Systems Solutions, PC<sup>2</sup>LAN/X.25, Point and Click Internetworking, SMARTnet, SynchroniCD, The Cell, The Packet, UniverCD, WNIC, Workgroup Director, Workgroup Stack, and XCI are trademarks, Access by Cisco and Bringing the power of internetworking to everyone are service marks, and Cisco, Cisco Systems, and the Cisco logo are registered trademarks of Cisco Systems, Inc. All other trademarks, service marks, registered trademarks, or registered service marks mentioned in this document are the property of their respective owners.



**Germany**  
Cisco Systems GmbH  
Max-Planck-Strasse 7  
85716 Unterschleissheim  
Germany  
Tel: 49 89 32 15070  
Fax: 49 89 32 150710

**Corporate Headquarters**  
Cisco Systems, Inc.  
170 West Tasman Drive  
San Jose, CA 95134-1706  
USA  
Tel: 408 526-4000  
800 553-NETS (6387)  
Fax: 408 526-4100

**European Headquarters**  
Cisco Systems Europe s.a.r.l.  
Z.A. de Courtaboeuf  
16 avenue du Quebec  
91961 Les Ulis Cedex  
France  
Tel: 33 1 6918 61 00  
Fax: 33 1 6928 83 26

**Austria**  
Cisco Systems Austria  
GmbH/World Trade Center  
A-1300 Vienna Airport  
Austria  
Tel: 43 1 71110 6233  
Fax: 43 1 71110 6017

**Belgium**  
Cisco Systems Bruxelles  
Complex Antares  
71 avenue des Pleiades  
1200 Brussels  
Belgium  
Tel: 32 2 778 42 00  
Fax: 32 2 778 43 00

**Denmark**  
Cisco Systems  
Larsbjomsstraede 3  
1454 Copenhagen K  
Denmark  
Tel: 45 33 37 71 57  
Fax: 45 33 37 71 53

**Italy**  
Cisco Systems Italy  
Via Turati 28  
20121 Milan  
Italy  
Tel: 39 2 62 726 43  
Fax: 39 2 62 729 13

**The Netherlands**  
Cisco Systems  
Stephensonweg 8  
4207 HB Gorinchem  
The Netherlands  
Tel: 31 18 30 22988  
Fax: 31 18 30 22404

**Norway**  
Cisco Systems  
Holmens Gate 4  
0250 Oslo  
Norway  
Tel: 47 22 83 06 31  
Fax: 47 22 83 22 12

**South Africa**  
Cisco Systems South Africa  
Prestige Business Center  
Sloane Park 90 Grayston Drive  
2152 Sandton  
South Africa  
Tel: 27 11 784 0414  
Fax: 27 11 784 0519

**Spain**  
Cisco Systems Spain  
Paseo de la Castellana, 141, pl  
18  
28046 Madrid  
Spain  
Tel: 34 1 57 203 60  
Fax: 34 1 57 045 99

**Sweden**  
Cisco Systems AB  
Arstaangsvagen 13  
11760 Stockholm  
Sweden  
Tel: 46 8 681 41 60  
Fax: 46 8 19 04 24

**Switzerland**  
Cisco Systems Switzerland  
Grossrietstrasse 7  
CH-8606 Naenikon/ZH  
Switzerland  
Tel: 41 1 905 20 50  
Fax: 41 1 941 50 60

**United Arab Emirates**  
Cisco Systems (Middle East)  
Dubai World Trade Center,  
Level-7  
P.O. Box 9204  
Dubai, U.A.E.  
Tel: 971 4 313712  
Fax: 971 4 313493

**United Kingdom**  
Cisco Systems Ltd.  
4 New Square  
Bedfont Lakes  
Feltham, Middlesex TW14 8HA  
United Kingdom  
Tel: 44 81 818 1400  
Fax: 44 81 893 2824

**Latin American Headquarters**  
Cisco Systems, Inc.  
170 West Tasman Drive  
San Jose, CA 95134-1706  
USA  
Tel: 408 526-7660  
Fax: 408 526-4646

**Asia**  
Cisco Systems (HK) Ltd  
Suite 1009, Great Eagle Centre  
23 Harbour Road  
Wanchai, Hong Kong  
Tel: 852 2583 9110  
Fax: 852 2824 9528

Cisco Systems (HK) Ltd  
Beijing Office  
Room 821/822, Jing Guang  
Centre  
Hu Jia Lou, Chao Yang Qu  
Beijing 100020 P.R.C.  
Tel: 86 1 501 8888 x821  
Fax: 86 1 501 4531

Cisco Systems (HK) Ltd  
New Delhi Liaison Office  
Suite 119, Hyatt Regency Delhi  
Bhikajii Cama Place  
Ring Road  
New Delhi 110066, India  
Tel: 91 11 688 1234  
Fax: 91 11 688 6833

Cisco Systems Korea  
27th Fl., Korea World Trade  
Center  
159, Samsung-dong,  
Kangnam-ku  
Seoul, 135-729, Korea  
Tel: 82 2 551 2730  
Fax: 82 2 551 2720

Cisco Systems (HK) Ltd  
Kuala Lumpur Office  
Level 5, Wisma Goldhill  
67 Jalan Raja Chulan  
50200 Kuala Lumpur, Malaysia  
Tel: 60 3 202 1122  
Fax: 60 3 202 1822

Cisco Systems (HK) Ltd  
Singapore Office  
Shell Tower, Level 37  
50 Raffles Place  
Singapore 0104  
Tel: 65 320 8398  
Fax: 65 320 8307

Cisco Systems (HK) Ltd  
Taipei Office  
4F, 25 Tunhua South Road,  
Section 1  
Taipei, Taiwan  
Tel: 886 2 577 4352  
Fax: 886 2 577 0248

Cisco Systems (HK) Ltd  
Bangkok Office  
23rd Floor, CP Tower  
313 Silom Road  
Bangkok 10500, Thailand  
Tel: 66 2 231-0600  
Fax: 66 2 231-0448

**Argentina**  
Cisco Systems Argentina  
Av. del Libertador 602 Piso 5  
(1001) Capital Federal  
Buenos Aires, Argentina  
Tel: 54 1 814 1391  
Fax: 54 1 814 1846

**Australia**  
Cisco Systems Australia Pty Ltd  
Level 17  
99 Walker Street  
PO Box 469  
North Sydney NSW 2060  
Australia  
Tel: 61 2 935 4100  
Fax: 61 2 957 4077

**Brazil**  
Cisco Systems Do Brasil  
Rua Helena 218, 10th Floor  
Cj 1004-1005  
Vila Olimpia - CEP 04552-050  
Sao Paulo - SP Brazil  
Tel: 55 11 822-5413  
Tel/Fax: 55 11 853-3104

**Mexico**  
Cisco Systems de México, S.A.  
de C.V.  
Ave. Ejecito Nacional No. 926  
3er Piso  
Col. Polanco C.P. 11560  
Mexico D.F.  
Tel: 525 328-7600  
Fax: 525 328-7699

**New Zealand**  
Cisco Systems New Zealand  
Level 16, ASB Bank Centre  
135 Albert Street  
P.O. Box 6624  
Auckland, New Zealand  
Tel: 64 9 358 3776  
Fax: 64 9 358 4442

**Japanese Headquarters**  
Nihon Cisco Systems K.K.  
Seito Kaikan 4F  
5, Sanbancho, Chiyoda-ku  
Tokyo 102, Japan  
Tel: 81 3 5211 2800  
Fax: 81 3 5211 2810

**Canada**  
Cisco Systems Canada Limited  
150 King Street West  
Suite 1707  
Toronto, Ontario MSH 1J9  
Canada  
Tel: 416 217-8000  
Fax: 416 217-8099

**United States**  
Central Operations  
5800 Lombardo Center  
Suite 160  
Cleveland, OH 44131  
Tel: 216 520-1720  
Fax: 216 328-2102

Eastern Operations  
1160 West Swedesford Road  
Suite 100  
Berwyn, PA 19312  
Tel: 610 695-6000  
Fax: 610 695-6006

Federal Operations  
1875 Campus Commons Drive  
Suite 305  
Reston, VA 22091  
Tel: 703 715-4000  
Fax: 703 715-4004

Northeastern Operations  
One Penn Plaza  
Suite 3501  
New York, NY 10119  
Tel: 212 330-8500  
Fax: 212 330-8505

Northern Operations  
8009 34th Avenue South  
Suite 1452  
Bloomington, MN 55425  
Tel: 612 851-8300  
Fax: 612 851-8311

Service Provider Operations  
(Telecommunications)  
111 Deerwood Road  
Suite 200  
San Ramon, CA 94583  
Tel: 510 855-4800  
Fax: 510 855-4899

Southwestern Operations  
14160 Dallas Parkway  
Suite 400  
Dallas, TX 75248  
Tel: 214 774-3300  
Fax: 214 774-3333

Western Operations  
2755 Campus Drive  
Suite 205  
San Mateo, CA 94403  
Tel: 415 377 5600  
Fax: 415 377 5699

Cisco Systems has over  
100 sales offices worldwide.  
Call the company's corporate  
headquarters (California, USA)  
at 408 526-4000 to contact your  
local account representative or,  
in North America, call  
800 553-NETS (6387).